

# NEWTOWNMOUNTKENNEDY TOWN CENTRE REFURBISHMENT PROJECT

FOR WICKLOW COUNTY COUNCIL

## RIVERSIDE WALK OUTDOOR LIGHTING REPORT

W335-OCSC-XX-XX-RP-C-0005

July 2022



# NEWTOWNMOUNTKENNEDY TOWN CENTRE REFURBISHMENT PROJECT

FOR WICKLOW COUNTY COUNCIL

## RIVERSIDE WALK OUTDOOR LIGHTING REPORT

W335-OCSC-XX-XX-RP-C-0005

July 2022



# OCSC

O'CONNOR | SUTTON | CRONIN

Multidisciplinary  
Consulting Engineers

**Newtownmountkennedy Town  
Centre Refurbishment Project  
Riverside Walk Outdoor Lighting Report**



**OCSC**

O'CONNOR | SUTTON | CRONIN

Multidisciplinary  
Consulting Engineers

## NOTICE

This document has been produced by O'Connor Sutton Cronin & Associates for its client Wicklow County Council. It may not be used for any purpose other than that specified by any other person without the written permission of the authors.

## DOCUMENT CONTROL & HISTORY

<b>OCSC Job No.:</b>  <b>W335</b>		<b>Project Code</b>	<b>Originator</b>	<b>Zone Volume</b>	<b>Level</b>	<b>File Type</b>	<b>Role Type</b>	<b>Number</b>	<b>Status / Suitability Code</b>	<b>Revision</b>
		W335	OCSC	XX	XX	RP	C	0005	A1	C01
<b>Rev.</b>	<b>Status</b>	<b>Authors</b>	<b>Checked</b>	<b>Authorised</b>	<b>Issue Date</b>					
C01	A1	L. Hadfield	N. McMenamin	B. O'Rourke	14.07.2022					
<b>Rev</b>	<b>Suitability Code</b>	<b>Author</b>	<b>Checker</b>	<b>Authorised</b>	<b>Issue Date</b>					

**DATE:** 13 July 2022  
**DESIGNER:** Laurent Hadfield  
**PROJECT No:** W335  
**PROJECT NAME:** River Walk



# Outdoor Lighting Report

## Layout Report

### General Data

Dimensions in Metres Angles in Degrees

### Calculation Grids

ID	Grid Name	X	Y	X' Length	Y' Length	X' Spacing	Y' Spacing
1	Grid 1	726450.32	706253.30	151.06	320.35	6.04	12.81
2	Grid 2	726551.36	706307.34	50.52	112.79	1.49	1.48

### Luminaires



### Luminaire A Data

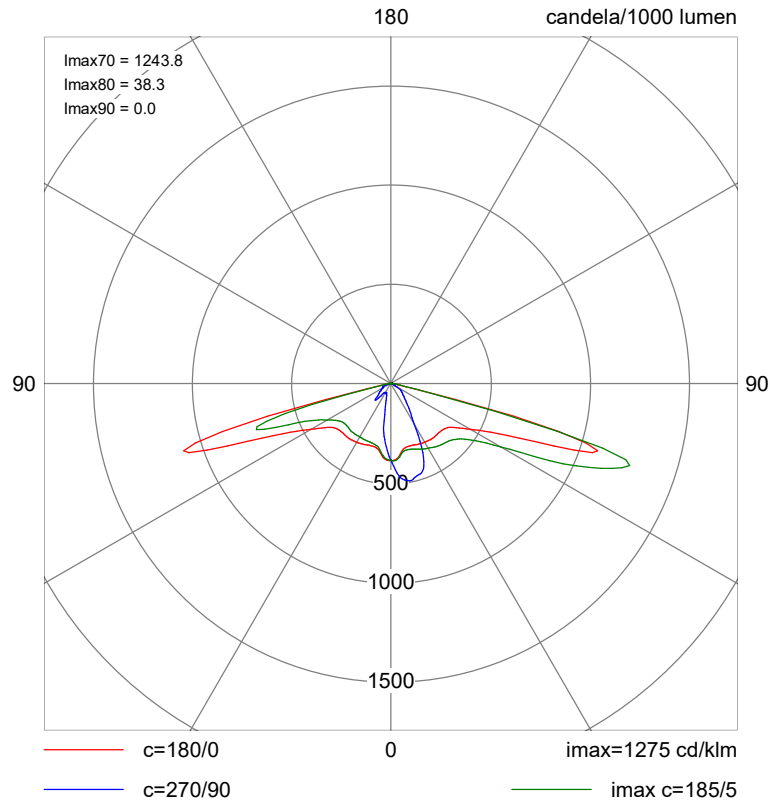
Supplier	Urbis Schreder
Type	AXIA 3.1 5296 Integrated lenses 8 OSLO N SQUARE GIANT@300mA W
Lamp(s)	8 OSLO N SQUARE GIANT @300mA WW 7 30 230V 01-37-041
LampFlux(klm)/Colour	1.03 WW 3000K/70
File Name	AXIA 3.1 5296 8 OSLO N SQUARE GIANT 3 00mA WW 730 8.4W 436952 Integrated le...
Maintenance Factor	0.76
Imax70,80,90(cd/klm)	1243.8, 38.3, 0.0
No. in Project	9

### Layout

ID	Type	X	Y	Height	Angle	Tilt	Cant	Out- reach	Target X	Target Y	Target Z
1	A	726581.09	706412.56	6.00	212.00	0.00	0.00	1.00			
2	A	726590.19	706395.36	6.00	178.00	0.00	0.00	1.00			
3	A	726581.02	706375.34	6.00	30.00	0.00	0.00	1.00			
4	A	726598.82	706371.27	6.00	191.00	0.00	0.00	1.00			
5	A	726583.10	706328.94	6.00	148.00	0.00	0.00	1.00			
6	A	726570.40	706320.76	6.00	128.00	0.00	0.00	1.00			
7	A	726561.05	706312.49	6.00	156.00	0.00	0.00	1.00			
8	A	726591.80	706340.89	6.00	151.00	0.00	0.00	1.00			
9	A	726600.13	706353.65	6.00	171.00	0.00	0.00	1.00			

## Polar Diagram

### Luminaire A AXIA 3.1 5296 Integrated lenses 8 OSLO SQUARE GIANT@300mA W



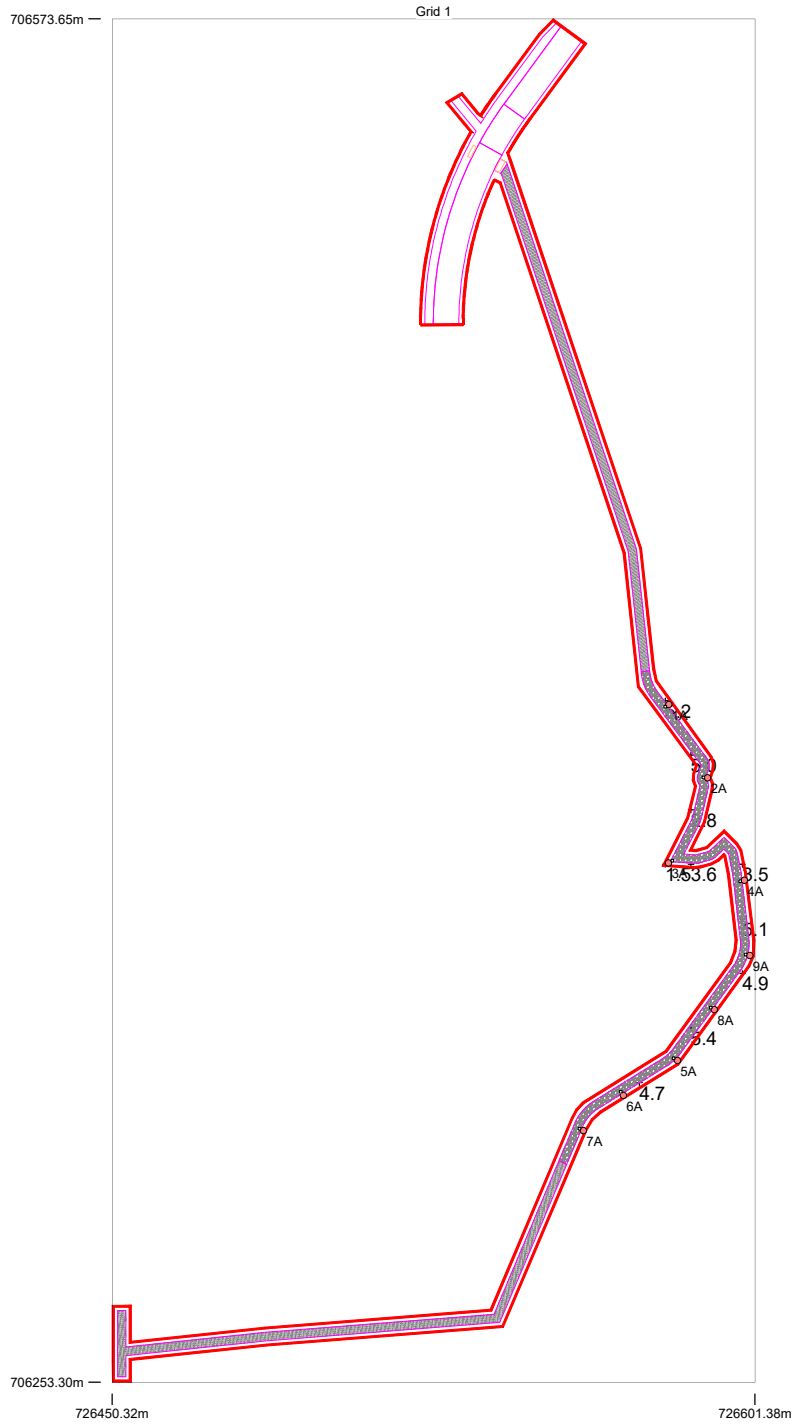






# Horizontal Illuminance (lux)

Grid 1

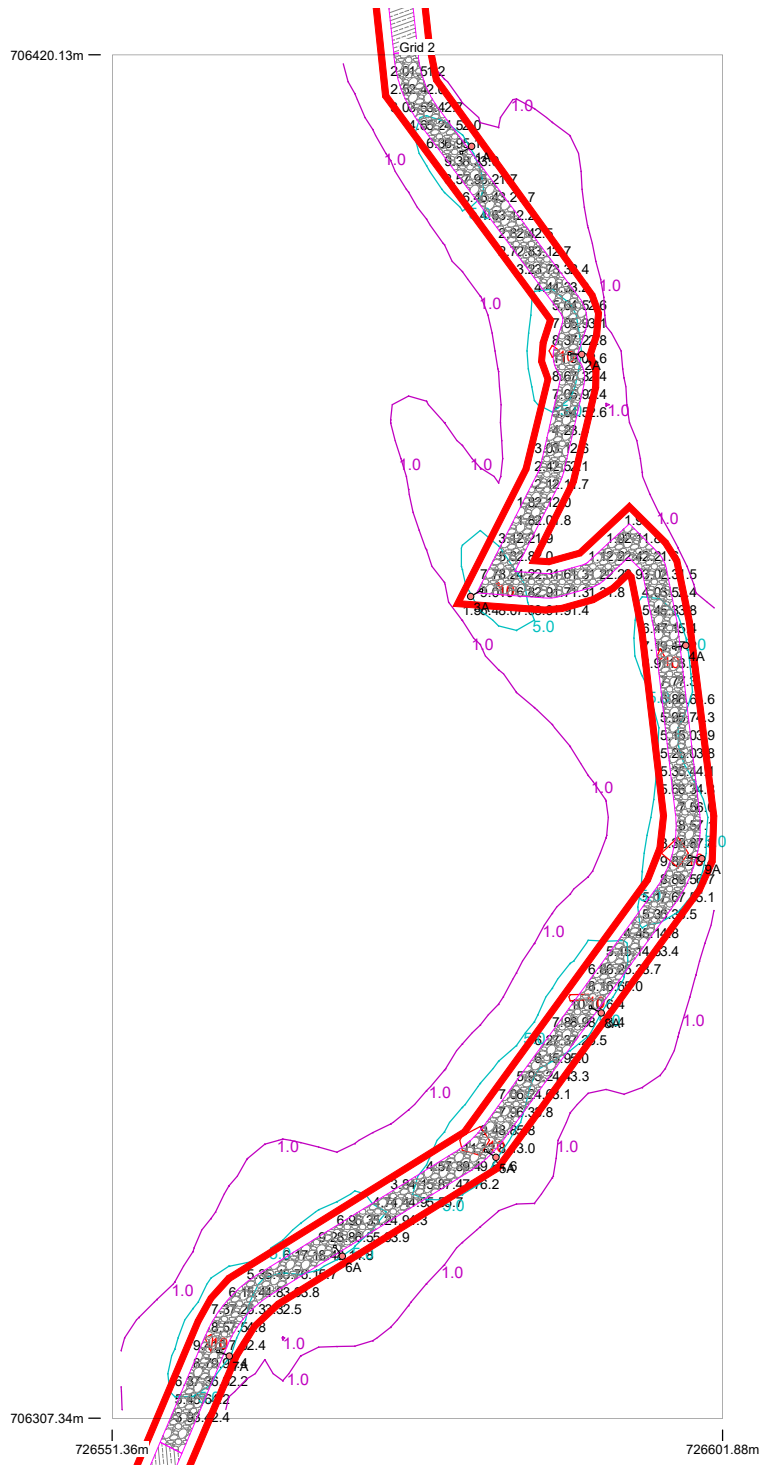


## Results

Eav	4.19
Emin	1.53
Emax	5.42
Emin/Emax	0.28
Emin/Eav	0.36

## Horizontal Illuminance (lux)

Grid 2

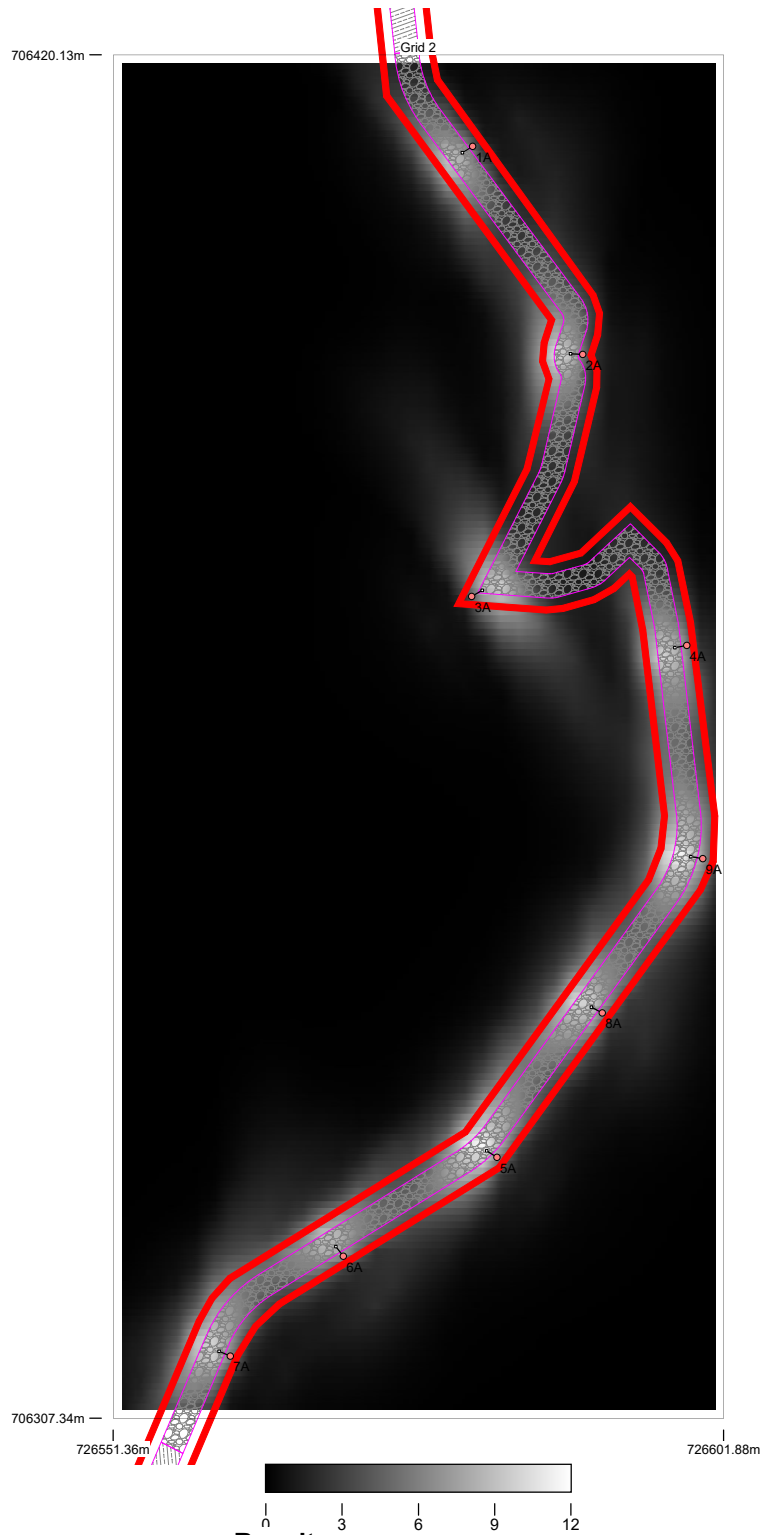


### Results

Eav	5.14
Emin	1.07
E <sub>max</sub>	12.14
Emin/E <sub>max</sub>	0.09
Emin/Eav	0.21

# Horizontal Illuminance (lux)

Grid 2

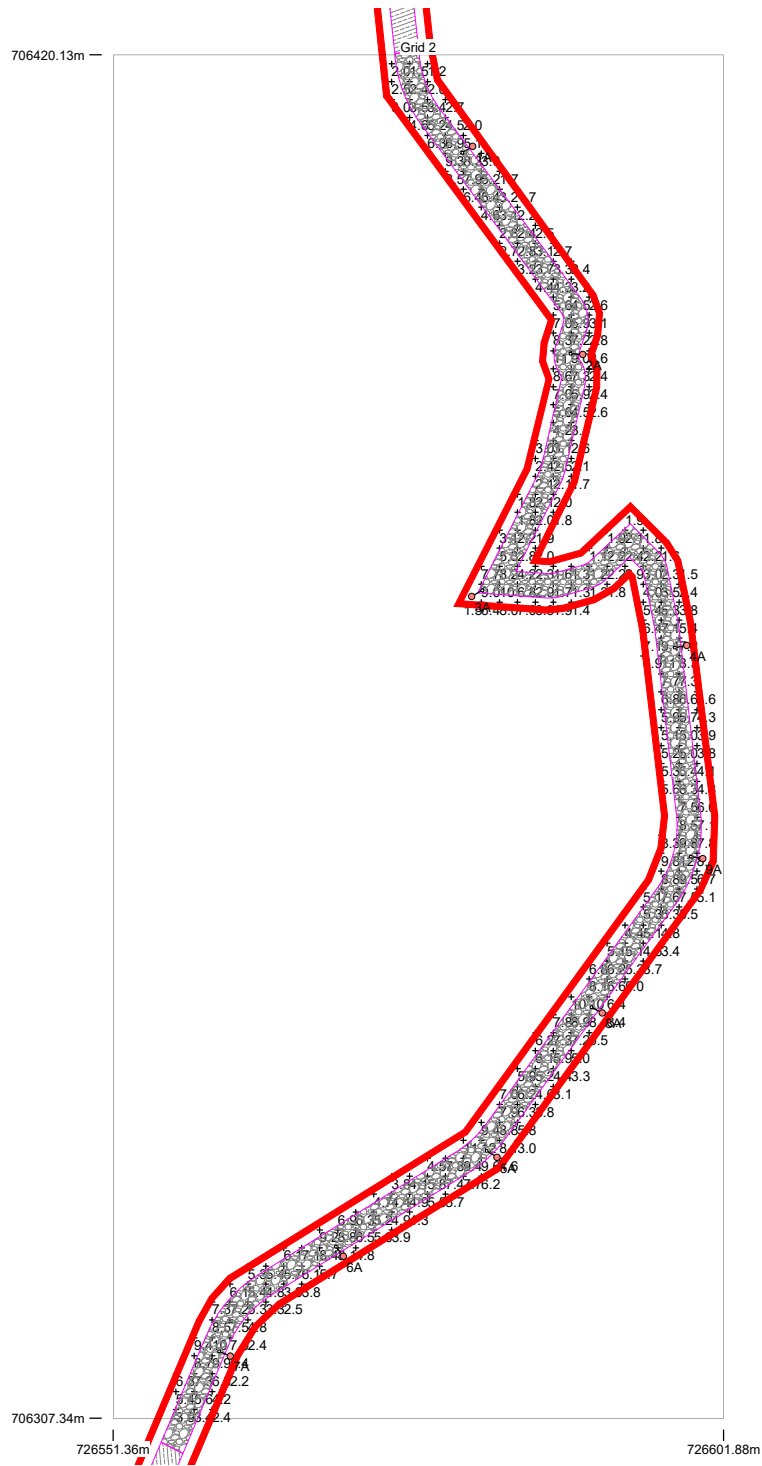


## Results

Eav	5.14
Emin	1.07
Emax	12.14
Emin/Emax	0.09
Emin/Eav	0.21

# Horizontal Illuminance (lux)

Grid 2



## Results

Eav	5.14
Emin	1.07
Emax	12.14
Emin/Emax	0.09
Emin/Eav	0.21



**OCSC**

O'CONNOR | SUTTON | CRONIN

Multidisciplinary  
Consulting Engineers

9 Prussia Street  
Dublin 7  
Ireland

T | +353 (0)1 8682000  
F | +353 (0)1 8682100  
W | [www.ocsc.ie](http://www.ocsc.ie)